

TEST D'ALCOOLÉMIE À USAGE UNIQUE À .05

Test d'alcoolémie



Instructions : Français & English

Point Zéro 8 vous
souhaite bonne route

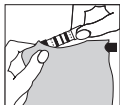


514 **953.0008**
PZ8.CA

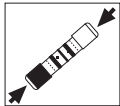
Instructions

Single use Alcohol Breath-tester

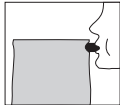
After drinking alcohol, wait 10 minutes before carrying out the breath-test.



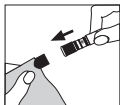
Extract the test has indicated.



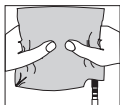
Push the two ends of the test, sliding them until the dotted lines.



Blow in the blue tube, filling the balloon with one breath only.



Completely insert the blue side of the test into the blue tube.



Push the balloon slowly, in about 12 seconds, until it is completely emptied.

The maximum presence of alcohol in the blood is reached about one hour subsequent to the last assumption of alcohol.

Read the test result between 2 and 15 minutes after deflating the balloon.

On contact with alcohol the reactant will turn green. If the green colour reaches or exceeds the middle line, you have exceeded the allowed limit of 0,25 mg of alcohol per air litre equal to 0,5 g of alcohol per blood litre.



Below the limit of 0,25 mg of alcohol per air litre



Above the limit of 0,25 mg of alcohol per air litre
Be careful. Do not drive.

514.953.0008

CHAUFFEURS DÉSIGNÉS
POINT ZERO 8
DESIGNATED DRIVERS

Before using the test, read the following instructions carefully.

Keep out of the reach of children and animals.

Do not swallow.

The breath-test contains corrosive elements.

Avoid contact with clothes.

Do not direct at anyone while deflating the balloon.

In case of contact of the reactant with skin or eyes, rinse accurately with water.

Avoid smoking during the test: the result could be modified. To use between 10°C / 50°F and 40°C / 104°F.

Disposable breath-test: it must be used only once, independently from its result.

After use, dispose of carefully and appropriately in a dustbin.

The results of the disposable breath-test cannot be held against those resulting from an official control.

Decisions made by the driver, on the basis of the results of this test, are at his or her sole responsibility.

With a blood alcohol content of 0.5 g/l of blood, the risk of road accident is multiplied by three.

The product's producer and distributors deny any responsibility for inappropriate use of the product and/or for inobservance of the necessary precautions and care.

Avoid exposing to sunlight or to temperatures higher than 40°C / 104°F.

Pay attention : fragile (the tube containing the reactant is made of glass).